

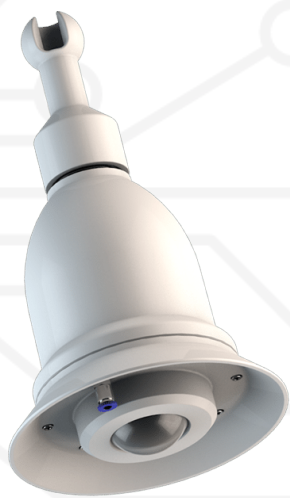
GS3 Processor & Bell Camera

Every journey matters, no matter how long or short

GRIDSMART's iconic Bell Camera delivers the transportation industry's only horizontal view that includes the center of the intersection. GRIDSMART uses vision-based tracking with a fisheye lens, empowering the system to track vehicles entering and exiting the intersection, whilst providing turning movement counts. GRIDSMART's GS3 Processor powers the Bell Camera's computer vision engine.

GS3 Processor

- Can be shelf-mounted or rack-mounted
- Housed in rugged, anodized aluminum
- Supports 2 Bell Camera's and 2 advanced detection cameras
- Weight: 14 lbs
- Environment: NEMA TS2, -34°C to 74°C
- Power: 120/240 VAC 50/60 Hz
- Video Output: MJPEG colour, H.264
- Detector I/O: TS1, TS2, 170/2070 or ATC interface



Bell Camera

- Power over Ethernet (PoE)
- Consumption: 5W nominal, 50W active heaters
- Weight: 5.6 lbs
- FCC Class A
- Environment: -34°C to 65°C
- Waterproof and dust-tight
- Image format: MJPEG colour