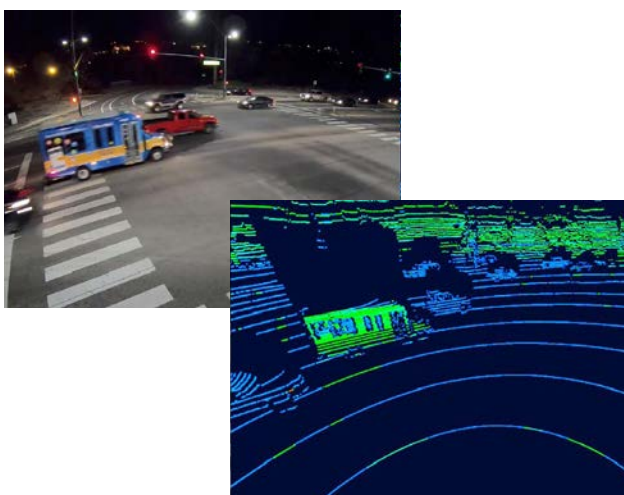


Turnkey traffic solutions combining LiDAR and AI technology

LiDAR stands for light detection and ranging, which uses eye-safe laser beams to create a 3D representation of a surveyed environment. This new solution combines Ouster's award-winning LiDAR sensors and Bluecity's powerful artificial intelligence (AI) software to monitor traffic networks and public spaces. It generates real-time mobility and safety data analytics with predictions, helping to improve traffic and crowd flow efficiency, advancing sustainability, and protecting vulnerable road users.

Benefits

- **Cost-effective:** Cost-effective solution for capturing multi-modal, 24/7 traffic data in real-time.
- **Quick Set-up:** Simple and quick to install. One sensor is installed for a chosen intersection. Full installation is usually completed in a few minutes.
- **Cloud-Based:** No need for expensive infrastructure, fibreoptics or large bandwidth. Data is processed at the intersection and transferred.



Features

- Provides precise traffic monitoring and valuable safety analytics
- Uses deep learning to transform raw LiDAR data into actionable road usage and safety information
- System reliably detects all road users in any weather or lighting condition
- Uniquely suited to deliver flexibility and quality performance for many applications