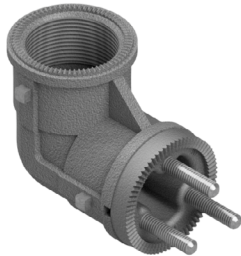


Aluminum Pipe Fittings



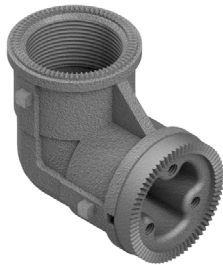
El, Serrated, 1-1/2" NPS, Alum

SE-0457 - Ports - Coating
 SOE=Slip 1 End PNC=Process No Color
 P__=Paint



El, Serrated, 1-1/2" NPS w/ Tri-Stud Adapter, Alum

SE-0514 - Coating
 PNC=Process No Color
 P__=Paint



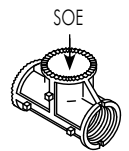
El, Serrated, 1-1/2" NPS w/ Tri-Bolt Adapter, Alum

SE-0501 - Coating
 PNC=Process No Color
 P__=Paint



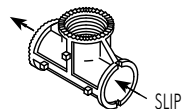
Tee, Serrated, 1-1/2" NPS, Alum

SE-0458 - Ports - Coating
 SOE=Slip1 End PNC=Process No Color
 P__=Paint



Tee, Serrated, 1-1/2" NPS, Horizontal Slip, Alum

SE-0474 - Coating
 PNC=Process No Color
 P__=Paint



- Note: 1. All assemblies are supplied standard with stainless steel fasteners.
 2. For double set screw option, specify by including -DS in the part number, i.e., SE-0457-DS-PNC.
 3. See Reference Section page v for available paint colors.



Aluminum Pipe Fittings



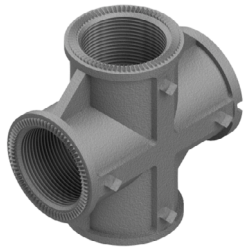
Tee, Serrated, 1-1/2" NPS w/ Tri-Stud Adapter, Alum

SE-0513 - Coating
 PNC=Process No Color
 P__=Paint



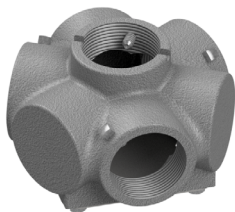
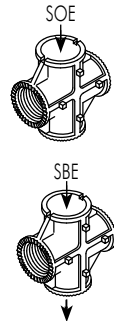
Tee, Serrated, 1-1/2" NPS w/ Tri-Bolt Adapter, Alum

SE-0500 - Coating
 PNC=Process No Color
 P__=Paint



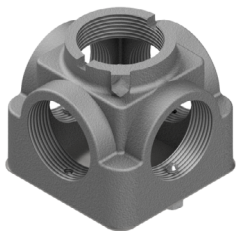
Cross, Serrated, 1-1/2" NPS, Alum

SE-4038 - Ports - Coating
 SOE=Slip 1 End PNC=Process No Color
 SBE=Slip Both Ends P__=Paint



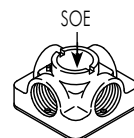
Center Support, 3-Way, 1-1/2" NPS, Alum

SE-0310 - Coating
 PNC=Process No Color
 P__=Paint



Center Support, 4-Way, 1-1/2" NPS, Alum

SE-0305 - Ports - Coating
 SOE=Slip 1 End PNC=Process No Color
 P__=Paint



- Note: 1. All assemblies are supplied standard with stainless steel fasteners.
 2. For double set screw option specify by including -DS in the part number, i.e., SE-0513-DS-PNC.
 3. See Reference Section page v for available paint colors.

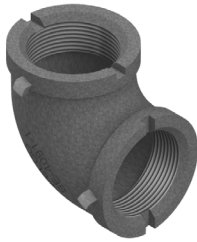
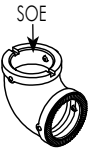


Iron Pipe Fittings



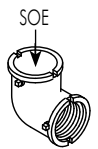
Ell, Serrated, 1-1/2" NPS, Iron

SE-4415 - Ports - Coating
 SOE=Slip 1 End GLV=Galvanized
 P__=Paint



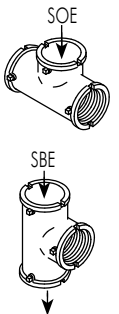
Ell, 1-1/2" NPS, Iron

SE-4091 - Ports - Coating
 SOE=Slip 1 End GLV=Galvanized
 P__=Paint



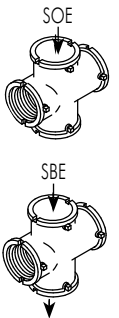
Tee, 1-1/2" NPS, Iron

SE-4092 - Ports - Coating
 SOE=Slip 1 End GLV=Galvanized
 SBE=Slip Both Ends P__=Paint



Cross, 1-1/2" NPS, Iron

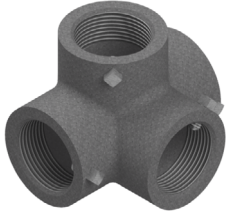
SE-4093 - Ports - Coating
 SOE=Slip 1 End GLV=Galvanized
 SBE=Slip Both Ends P__=Paint



- Note: 1. All assemblies are supplied standard with stainless steel fasteners.
 2. For double set screw option specify by including -DS in the part number, i.e., SE-4415-DS-PNC.
 3. Iron fittings, with the exception of SE-4415 Ell, are not serrated. For serrations add brass or alum serrated locking.
 4. See Reference Section page v for available paint colors.

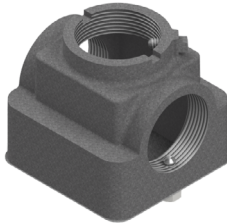


Iron Pipe Fittings



Side Outlet Tee, 1-1/2" NPS, Iron

SE-0437 - -
 Ports Coating
 SOE=Slip 1 End GLV=Galvanized
 N=Notched P__=Paint



Center Support, 2-Way, 1-1/2" NPS, Iron

SE-0495 -
 Coating
 P__=Paint



Center Support, 3-Way, 1-1/2" NPS, Iron

SE-0482 -
 Coating
 P__=Paint

Note: Double set screws are standard.



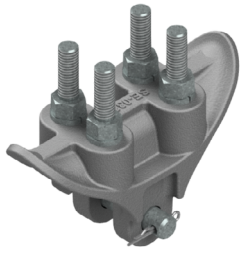
Center Support, 4-Way, 1-1/2" NPS, Iron

SE-0496 -
 Coating
 P__=Paint

- Note: 1. All assemblies are supplied standard with stainless steel fasteners.
 2. For double set screw option specify by including -DS in the part number, i.e., SE-0496-DS-PNC.
 3. Iron fittings, with the exception of SE-4415 Ell, are not serrated. For serrations add alum or brass serrated locking.
 4. See Reference Section page v for available paint colors.



Span Wire



Span Wire Clamp w/ U-Bolts 3/4" Wide Slot, Alum

SE-0321 - - - PNC

Bushing Stainless Upgrade
 Blank=None Blank=Galv
 SB=Stainless Bushing SS=Stainless

Span Wire Clamp w/ U-Bolts 5/8" Wide Slot, Alum

SE-4077 - - - PNC

Bushing Stainless Upgrade
 Blank=None Blank=Galv
 SB=Stainless Bushing SS=Stainless

Span Wire Clamp w/ U-Bolts 1/2" Wide Slot, Alum

SE-3211 - - - PNC

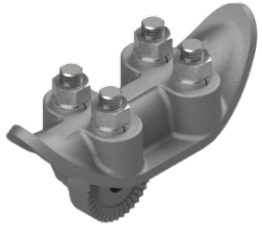
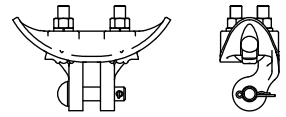
Bushing Stainless Upgrade
 Blank=None Blank=Galv
 SB=Stainless Bushing SS=Stainless



Span Wire Clamp, 90° w/ U-Bolts 1/2" Wide Slot, Alum

SE-3212 - - - PNC

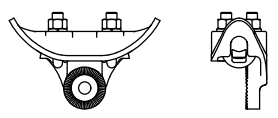
Bushing Stainless Upgrade
 Blank=None Blank=Galv
 SB=Stainless Bushing SS=Stainless



Span Wire Clamp w/ U-Bolts Serrated, Alum

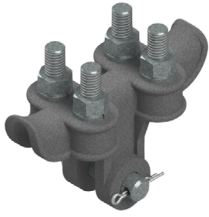
SE-3213 - - PNC

Stainless Upgrade
 Blank=Galv
 SS=Stainless



Note: 1. All span wire clamps are supplied standard with galvanized fasteners.





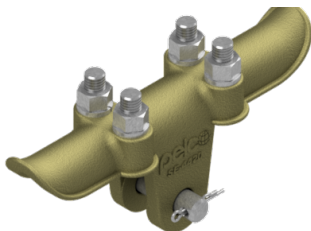
Span Wire Clamp w/ U-Bolts 1/2" Wide Slot, Iron

SE-0388 - - PNC
Stainless Upgrade
Blank=Galv
SS=Stainless



Span Wire Clamp, Long w/ Stainless U-Bolts 5/8" Wide Slots, Iron

SE-4186-GLV



Span Wire Clamp, Long w/ Stainless U-Bolts 3/4" Wide Slots, Bronze

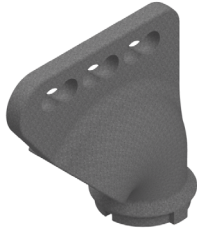
SE-3323-PNC

Note: 1. Upgrade of stainless from galvanized fasteners available where indicated.



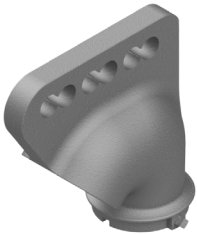
Span Wire

COMPONENTS



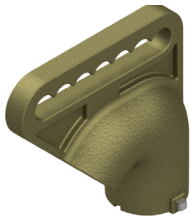
Wire Outlet Body, Iron w/ Grommet 1-1/2" NPS, 1/2" Wide Comb

SE-4118 - -
Coating
P__=Paint



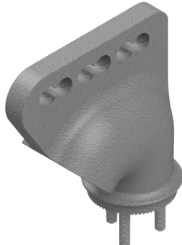
Wire Outlet Body, Alum w/ Grommet 1-1/2" NPS, 3/4" Wide Comb

SE-4117 - - PNC
Bushing
Blank=None
SB=Stainless Bushing



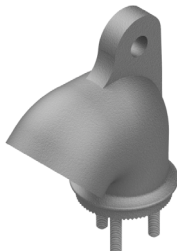
Wire Outlet Body w/ Grommet 1-1/2" NPS, 3/4" Wide Comb, Bronze

SE-4421 - -
Coating
PNC=Process No Color
P__=Paint



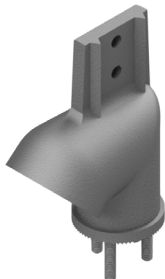
Wire Outlet Body w/ Grommet Tri-Stud, 3/4" Wide Comb, Alum

SE-0545 - - -
Bushing Coating
Blank=None PNC=Process No Color
SB=Stainless Bushing P__=Paint



Wire Outlet Body w/ Grommet Tri-Stud, Single Clevis, Alum

SE-0524 - - -
Bushing Coating
Blank=None PNC=Process No Color
SB=Stainless Bushing P__=Paint

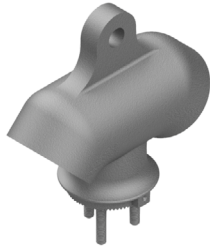


Wire Outlet Body w/ Grommet Tri-Stud Adjustable, Alum

SE-0523 - -
Coating
PNC=Process No Color
P__=Paint

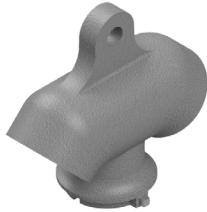
- Note: 1. All assemblies are supplied standard with stainless steel fasteners.
 2. For double set screws option specify by including -DS in the part number, i.e., SE-4118-DS-PNC.
 3. See Reference Section page v for available paint colors.





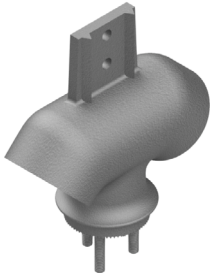
Wire Outlet Body, Double Single Clevis Tri-Stud, 3/4" Wide, Alum

SE-0531 - -
 Bushing Coating
 Blank=None PNC=Process No Color
 SB=Stainless Bushing P__=Paint



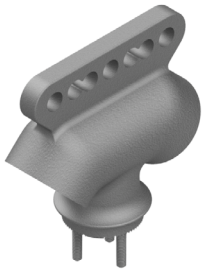
Wire Outlet Body, Double Single Clevis 1-1/2" NPS, 3/4" Wide, Alum

SE-4058 - -
 Bushing Coating
 Blank=None PNC=Process No Color
 SB=Stainless Bushing P__=Paint



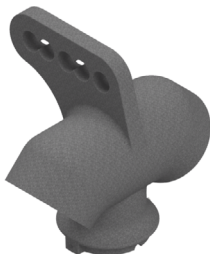
Wire Outlet Body, Double Adjustable Tri-Stud, Alum

SE-0532 -
 Coating
 PNC=Process No Color
 P__=Paint



Wire Outlet Body, Double Multi Clevis Tri-Stud, 3/4" Wide Comb, Alum

SE-0558 - -
 Bushing Coating
 Blank=None PNC=Process No Color
 SB=Stainless Bushing P__=Paint



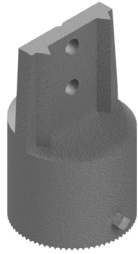
Wire Outlet Body, Double Universal 1-1/2" NPS, 1/2" Wide Comb, Iron

SE-4155 - -
 Bushing Coating
 Blank=None P__=Paint
 SB=Stainless Bushing

- Note: 1. All assemblies are supplied standard with stainless steel fasteners.
 2. For double set screws option specify by including -DS in the part number, i.e., SE-4058-DS-PNC.
 3. See Reference Section page v for available paint colors.

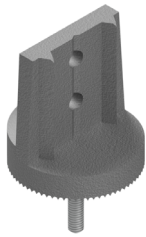


Span Wire



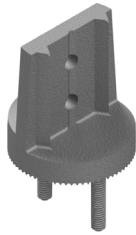
Hanger Body, 1-1/2" NPS, Alum

SE-0530 - Coating
PNC=Process No Color
P__=Paint



Hanger Body, Single-Stud, Alum

SE-0438 - Coating
PNC=Process No Color
P__=Paint



Hanger Body, Double Stud, Alum

SE-0516 - Coating
PNC=Process No Color
P__=Paint

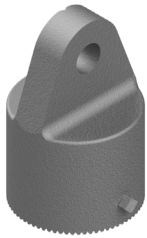


Hanger Body, Tri-Stud, Alum

SE-0512 - Coating
PNC=Process No Color
P__=Paint

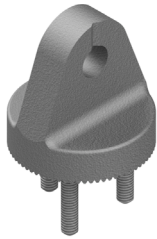
- Note: 1. All assemblies are supplied standard with stainless steel fasteners.
2. For double set screws option specify by including -DS in the part number, i.e., SE-0530-DS-PNC.
3. See Reference Section page v for available paint colors.





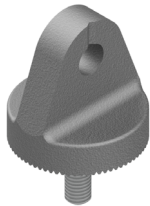
Clevis Adapter, 1-1/2" NPS 3/4" Clevis, Alum

SE-4030 - -
 Bushing Coating
 Blank=None PNC=Process No Color
 SB=Stainless Bushing P__=Paint



Clevis Adapter, 5/16"-18 Tri-Stud 3/4" Clevis, Alum

SE-4031 - -
 Bushing Coating
 Blank=None PNC=Process No Color
 SB=Stainless Bushing P__=Paint



Clevis Adapter, 1/2"-13 Single Stud 3/4" Clevis, Alum

SE-0540 - -
 Bushing Coating
 Blank=None PNC=Process No Color
 SB=Stainless Bushing P__=Paint



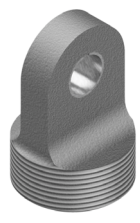
Clevis Adapter, 1/2"-13 Single Stud 3/4" Wide Slot, Alum

SE-0630 - -
 Bushing Coating
 Blank=None PNC=Process No Color
 SB=Stainless Bushing P__=Paint

Note: 1. All assemblies are supplied standard with stainless steel fasteners.
 2. For double set screws option specify by including -DS in the part number, i.e., SE-4030-DS-PNC.
 3. See Reference Section page v for available paint colors.

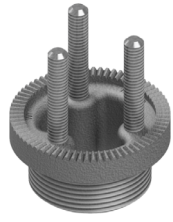


Span Wire



Span Wire Adapter, 1-1/2" NPS 5/8" Clevis w/ Stainless Bushing, Alum

SE-0371 - Coating
PNC=Process No Color
P__=Paint



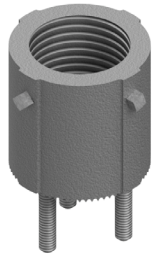
Tri-Stud Adapter, 1-1/2" NPS External Threads Alum

SE-0503 - PNC



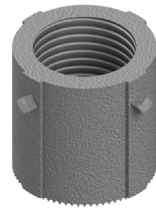
Tri-Bolt Adapter, 1-1/2" NPS External Threads Alum

SE-0502 - PNC



Tri-Stud Adapter, 1-1/2" NPS Internal Threads Alum

SE-0533 - Coating
PNC=Process No Color
P__=Paint



Tri-Bolt Adapter, 1-1/2" NPS Internal Threads, Alum

SE-4242 - Coating
PNC=Process No Color
P__=Paint

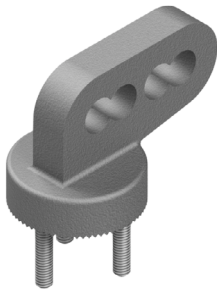
Note: 1. All assemblies are supplied standard with stainless steel fasteners.
2. For double set screws option specify by including -DS in the part number, i.e., SE-0533-DS-PNC.
3. See Reference Section page v for available paint colors.





**Disconnect Balancer, 1-1/2" NPS
1/2" Wide Comb, Iron, Zinc 2**

SE-0380-ZN2



**Disconnect Balancer, Tri-Stud
3/4" Wide Comb, Alum**

SE-0505 - -
Blank=None PNC=Process No Color
SB=Stainless Bushing P__=Paint

Note: 1. All assemblies are supplied standard with stainless steel fasteners.
2. See Reference Section page v for available paint colors.





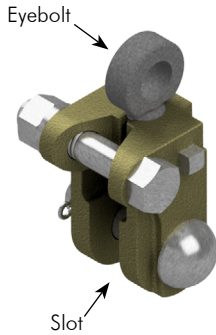
PAL Balance Adjuster, Pivot and Lock Stainless Eyebolt & Pin, Steel

SE-3219	-	Slot	-	Eyebolt	-	GLV
		0.50=1/2"		0.50=1/2"		
		0.75=3/4"		0.75=3/4"		



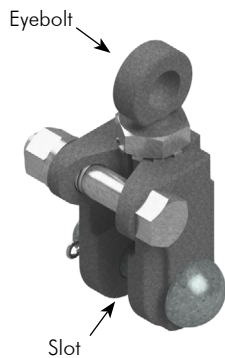
Balance Adjuster Galv Eyebolt & Stainless Pin, Iron

SE-3108	-	Slot	-	Eyebolt	-	GLV
		0.50=1/2"		0.50=1/2"		
		0.75=3/4"		0.75=3/4"		



Balance Adjuster Galv Eyebolt & Stainless Pin, Bronze

SE-3200	-	Slot	-	Eyebolt	-	PNC
		0.50=1/2"		0.50=1/2"		
		0.75=3/4"		0.75=3/4"		



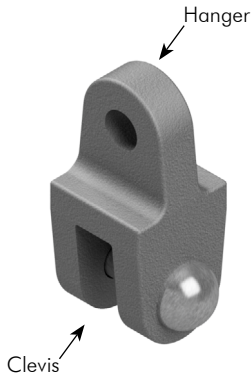
Balance Adjuster w/ Jam Nut & Lock Washer Galv Eyebolt & Stainless Pin, Iron

SE-3191	-	Slot	-	Eyebolt	-	GLV
		0.50=1/2"		0.50=1/2"		
		0.75=3/4"		0.75=3/4"		

Note: 1. All assemblies are supplied standard with stainless steel fasteners.
2. See Reference Section page v for available paint colors.



Clevis Hanger w/ Stainless Pin 3/4" Hanger x 3/4" Clevis, Alum



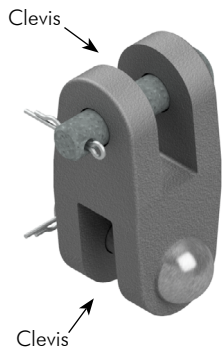
SE-0467 - -
 Bushing Coating
 Blank=None PNC=Process No Color
 SB=Stainless Bushing P__=Paint

Clevis Hanger w/ Stainless Pin 3/4" Hanger x 1/2" Clevis, Alum

SE-0610 - -
 Bushing Coating
 Blank=None PNC=Process No Color
 SB=Stainless Bushing P__=Paint

Clevis-Clevis Hanger w/ Stainless Pins 3/4" x 1/2", Alum

SE-0611 - -
 Bushing Coating
 Blank=None PNC=Process No Color
 SB=Stainless Bushing P__=Paint



Clevis-Clevis Hanger w/ Stainless Pins 3/4" x 3/4", Alum

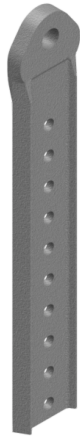
SE-0468 - -
 Bushing Coating
 Blank=None PNC=Process No Color
 SB=Stainless Bushing P__=Paint

Clevis-Clevis Hanger w/ Stainless Pins 1/2" x 1/2", Alum

SE-0464 - -
 Bushing Coating
 Blank=None PNC=Process No Color
 SB=Stainless Bushing P__=Paint

Note: 1. All assemblies are supplied standard with stainless steel fasteners.
 2. See Reference Section page v for available paint colors.





Extender Connector Hanger, 10-Hole Alum

SE-0539 - -
 Bushing Coating
 Blank=None PNC=Process No Color
 SB=Stainless Bushing P__=Paint



Extender Connector Hanger, 10-Hole, Serrated, Alum

SE-0543 - -
 Bushing Coating
 Blank=None PNC=Process No Color
 SB=Stainless Bushing P__=Paint



Extender Connector Hanger, 2-Hole 1/2" Width, Alum

SE-0508 - -
 Bushing Coating
 Blank=None PNC=Process No Color
 SB=Stainless Bushing P__=Paint



Extender Connector Hanger, 2-Hole Heavy Duty 3/4" Width, Alum

SE-0656 - -
 Bushing Coating
 Blank=None PNC=Process No Color
 SB=Stainless Bushing P__=Paint

Note: See Reference Section page v for available paint colors.





Extender, 3/8" Dia Holes 1" CTC, Alum

SE-0507 - -

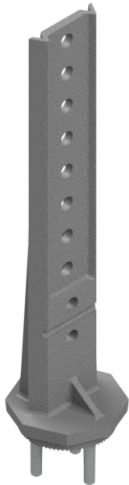
Length Coating

11=11" PNC=Process No Color

19=19" P__=Paint

40=40"

72=72"



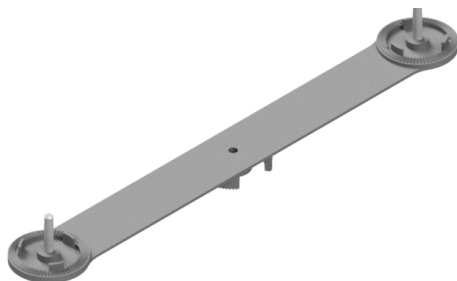
Tri-Stud Hanger Body, Adjustable 10-Hole, Alum

SE-0538 -

Coating

PNC=Process No Color

P__=Paint



Lower Arm, 2-Way 16-1/2" CTC Single Stud Serrated, Alum

SE-4010 -

Coating

PNC=Process No Color

P__=Paint

Lower Arm, 2-Way 17" CTC Single Stud Serrated, Alum

SE-0521 -

Coating

PNC=Process No Color

P__=Paint

Note: 1. See Reference Section page v for available paint colors.

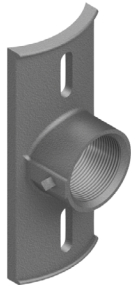


Hubs & Mounting Brackets



Hub Plate w/ Cable Guide, 1-1/2" NPS, Alum

SE-0444 -
Coating
PNC=Process No Color
P__=Paint

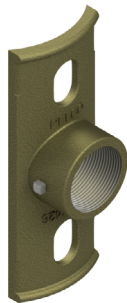


Hub Plate w/o Cable Guide, 1-1/2" NPS, Alum

SE-0445 -
Coating
PNC=Process No Color
P__=Paint

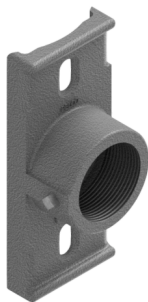
Hub Plate w/o Cable Guide, 1-1/2" NPS, Iron

SE-4124 -
Coating
P__=Paint



Hub Plate w/o Cable Guide, 1-1/2" NPS, Bronze

SE-4426 -
Coating
PNC=Process No Color
P__=Paint



Hub Plate, Universal, 1-1/2" NPS w/ 15/16" Dia Hole in Rear, Alum

SE-4071 -
Coating
PNC=Process No Color
P__=Paint

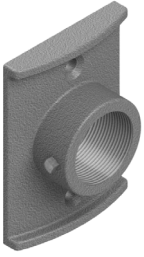
Hub Plate, Universal, 1-1/2" NPS w/ 1-1/2" Dia Hole in Rear, Alum

SE-4108 -
Coating
PNC=Process No Color
P__=Paint

- Note: 1. All assemblies are supplied standard with stainless steel fasteners.
2. For double set screw option specify by including -DS in the part number, i.e., SE-0444-DS-PNC.
3. See Reference Section page v for available paint colors.



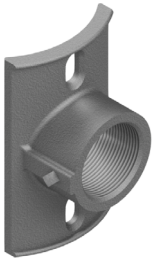
Hubs & Mounting Brackets



Hub Plate, Flat Back, 1-1/2" NPS, Alum

SE-0415 -

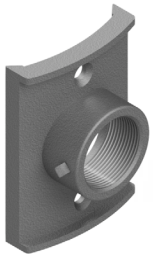
Coating
PNC=Process No Color
P__=Paint



Hub Plate, 4" Pipe, 1-1/2" NPS, Alum

SE-0454 -

Coating
PNC=Process No Color
P__=Paint



Hub Plate, Large Pole, 1-1/2" NPS, Alum

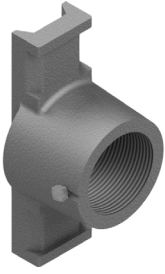
SE-0357 -

Coating
PNC=Process No Color
P__=Paint

- Note: 1. All assemblies are supplied standard with stainless steel fasteners.
2. For double set screw option specify by including -DS in the part number, i.e., SE-0415-DS-PNC.
3. See Reference Section page v for available paint colors.



Hubs & Mounting Brackets



Hub Plate, Narrow, 1-1/2" NPS, Alum

SE-4050 -

Coating
PNC=Process No Color
P_=_Paint

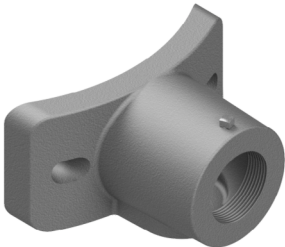


Hub Plate, Single, 1-1/2" NPS, Alum

SE-0111 - -

Mounting Hole
Blank= 3/8" Dia
0.563=9/16" Dia

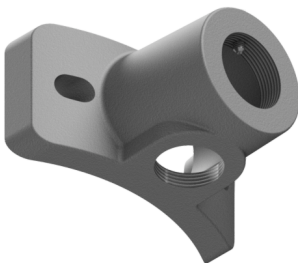
Coating
PNC=Process No Color
P_=_Paint



Hub Plate, Wood Pole 1-1/2" NPS, Alum

SE-4079 -

Coating
PNC=Process No Color
P_=_Paint



Hub Plate, Wood Pole 1-1/2" NPS w/ 1-1/4" NPT Downhole, Alum

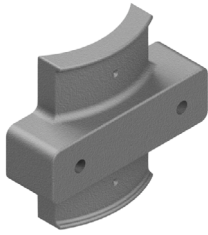
SE-4080 -

Coating
PNC=Process No Color
P_=_Paint

- Note: 1. All assemblies are supplied standard with stainless steel fasteners.
2. For double set screw option specify by including -DS in the part number, i.e., SE-4050-DS-PNC.
3. See Reference Section page v for available paint colors.



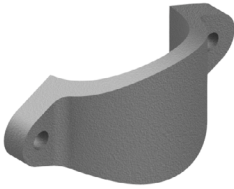
Hubs & Mounting Brackets



Cabinet Mounting Bracket, Alum

SE-0425 -

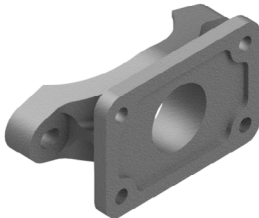
Coating
 PNC=Process No Color
 P__=Paint



Adapter, 2-7/8" to 3-1/2" OD Pole, Alum

SE-4078 -

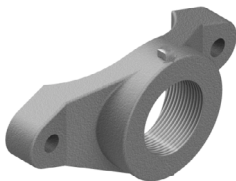
Coating
 PNC=Process No Color
 P__=Paint



Mounting Bracket, 4-1/2" OD Pole, Alum

SE-0104 -

Coating
 PNC=Process No Color
 P__=Paint



Mounting Hub, 1-1/2" NPS, 4-1/2" OD Pole, Alum

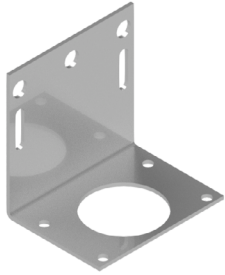
SE-0384 -

Coating
 PNC=Process No Color
 P__=Paint

Note: 1. All assemblies are supplied standard with stainless steel fasteners.
 2. For double set screw option specify by including -DS in the part number, i.e., SE-0384-DS-PNC.
 3. See Reference Section page v for available paint colors.



Hubs & Mounting Brackets



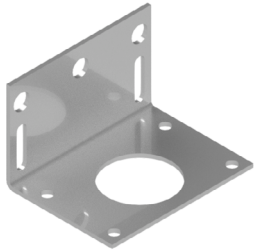
Cabinet Mounting Bracket, 1/8" Thick 4-1/2" x 3-3/8" x 4-1/2", Alum

SE-0141 -

Coating

PNC=Process No Color

P__=Paint



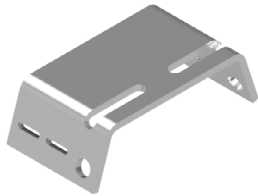
Cabinet Mounting Bracket, 1/8" Thick 4-1/2" x 3-3/8" x 2-7/8", Alum

SE-0113 -

Coating

PNC=Process No Color

P__=Paint



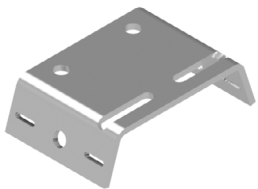
Cabinet Mounting Bracket, 1/4" Thick 6-3/4" x 3-1/2" x 2-1/16", Alum

SE-0118 -

Coating

PNC=Process No Color

P__=Paint



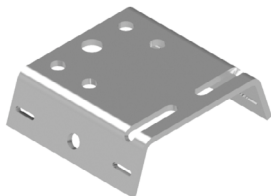
Cabinet Mounting Bracket, 1/4" Thick 6-3/4" x 4-1/2" x 2-1/16", Alum

SE-0120 -

Coating

PNC=Process No Color

P__=Paint



Cabinet Mounting Bracket, 1/4" Thick 6-3/4" x 6" x 2-1/16", Alum

SE-0126 -

Coating

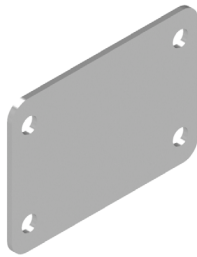
PNC=Process No Color

P__=Paint

Note: See Reference Section page v for available paint colors.



Hubs & Mounting Brackets



**Closure Plate, Alum
Flasher Cabinet**

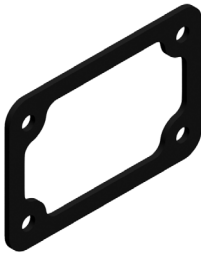
SE-0117 -

Coating



PNC=Process No Color

P__=Paint



SE-0119-PNC **Hub Gasket, 1/8" Closed Cell Sponge
Adhesive Backed
Flasher Cabinet**



SE-0148-PNC **Hub Gasket, 1/8" Neoprene
Flasher Cabinet**

This page is intentionally left blank.



Tubes & Pipes



SE-0326 - Length in Inches - Coating **Support Tube, 1-1/2" NPS, Alum**
PNC=Process No Color
P__=Paint

SE-4370 - Length in Inches - Coating **Support Tube, 2" NPS, Alum**
PNC=Process No Color
P__=Paint

SE-0491 - Length in Inches - Coating **Support Tube, 1-1/2" NPS, Steel**
PNC=Process No Color
P__=Paint



SE-0484 - Length in Inches - Coating **Pipe, 1-1/2", Sch 40, Alum**
PNC=Process No Color
P__=Paint

SE-0475 - Length in Inches - Coating **Pipe, 1-1/2", Sch 80, Alum**
PNC=Process No Color
P__=Paint

SE-0494 - Length in Inches - Coating **Pipe, 2", Sch 40, Alum**
PNC=Process No Color
P__=Paint

SE-4362 - Length in Inches - Coating **Pipe, 2", Sch 80, Alum**
PNC=Process No Color
P__=Paint

Note: 1. Standard tubes and pipes are sold in 1 inch increments. For other lengths contacts sales.
2. See Reference Section page v for available paint colors.





SE-0436 - Length in Inches - Coating **Nipple, 1-1/2" NPS, Sch 40 Alum**
 PNC=Process No Color
 P__=Paint

SE-4372 - Length in Inches - Coating **Nipple, 1-1/2" NPS, Sch 80 Alum**
 PNC=Process No Color
 P__=Paint

SE-4204 - Length in Inches - Coating **Nipple, 1-1/2" NPS x NPT, Alum**
 PNC=Process No Color
 P__=Paint

SE-0469 - Length in Inches - Coating **Nipple, 1-1/2" NPS, Steel**
 P__=Paint

SE-4200 - Length in Inches - Coating **Nipple, 1-1/2" NPT, Steel**
 P__=Paint



SE-0309 - Length - PNC **All Thread Nipple, 1-1/2" NPS, Alum**
 02.13=2-1/8"
 02.5=2-1/2"
 03=3"
 04=4"
 04.5=4-1/2"
 05=5"
 06=6"

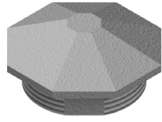
SE-0492 - Length - ZN1 **All Thread Nipple, 1-1/2" NPS, Steel**
 02.13=2-1/8"
 02.5=2-1/2"
 03=3"
 04=4"
 04.5=4-1/2"
 05=5"
 06=6"

SE-4063 - Length - ZN1 **Close Nipple, 1-1/2" NPS x NPT, Steel**
 02.5=2-1/2"
 03=3"
 03.5=3-1/2"

Note: 1. Standard tubes and pipes are sold in 1 inch increments. For other lengths contacts sales.
 2. See Reference Section page v for available paint colors.



Caps & Closures

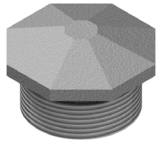


Octagonal Closure Cap, Alum 1-1/2" NPS x 1/2"

SE-4088 -

Coating

PNC=Process No Color
P__=Paint

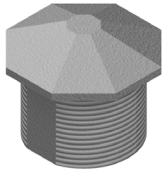


Octagonal Closure Cap, Alum 1-1/2" NPS x 7/8"

SE-0361 -

Coating

PNC=Process No Color
P__=Paint

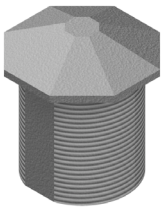


Octagonal Closure Cap, Alum 1-1/2" NPS x 1-3/8"

SE-0483 -

Coating

PNC=Process No Color
P__=Paint

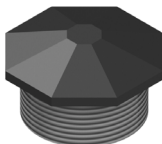


Octagonal Closure Cap, Alum 1-1/2" NPS x 2"

SE-0442 -

Coating

PNC=Process No Color
P__=Paint



Octagonal Closure Cap, Plastic 1-1/2" NPS x 7/8"

SE-0499 -

Color

P01=Yellow
P02=Black
P05=New York State Green (forest)
P06=Automatic Green (dark olive)
P17=Platinum

Note: See Reference Section page v for available paint colors.





Fitting Cap, 1-1/2", Plastic

SE-0304 - Color
P01=Yellow
P02=Black



Fitting Cap, 1-1/4", Plastic

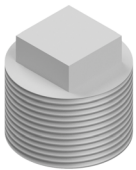
SE-0419 - Color
P01=Yellow
P02=Black



AS-0398-P02 Tube Cap, Black Plastic



AB-0271-PNC Cap, CGB Closure, 3/4", Plastic



SE-0479-PNC Plug, 1-1/4" Sq Hd, Threaded, Plastic,



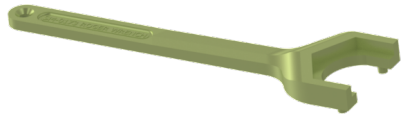
Signal Closure Kit, Plastic

SE-3054 - Color
P01=Yellow
P02=Black
P05=New York State Green (forest)
P06=Automatic Green (dark olive)

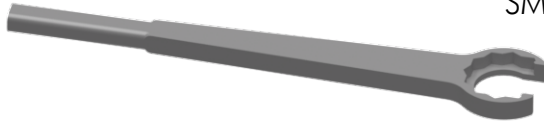
Note: 1. All assemblies are supplied standard with stainless steel fasteners.



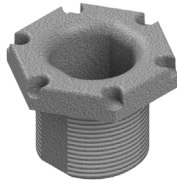
Hardware



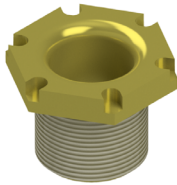
SM-0173-ZN2 **Roger Wrench w/ 10" Handle, Steel, Zinc 2**



SM-0337-PNC **Hex Nipple Wrench, 12 Pt, 18" Handle, Alum**

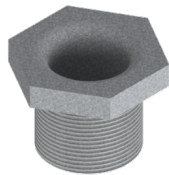


SE-0443-PNC **Hex Nipple, 1-1/2" NPS x 1-1/2" Lg, Alum**

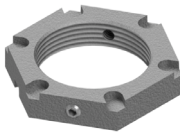


SE-0435-ZN2 **Hex Nipple, 1-1/2" NPS x 1-1/2" Lg, Steel, Zinc 2**

SE-0644-ZN2 **Hex Nipple, 1-1/2" NPS x 1-3/4" Lg, Steel, Zinc 2**



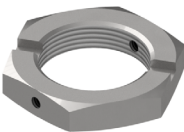
SE-0690-GLV **Hex Nipple, 1-1/2" NPS x 1-1/2" Lg, Steel, Galv**



Check Nut, 1-1/2" NPS, Alum

SE-0448 - - PNC

Set Screws
 1S=Single Set Screw
 DS=Double Set Screw



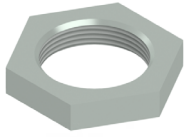
Check Nut, 1-1/2" NPS, Steel, White Zinc

SE-0670 - - ZN1

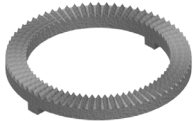
Set Screws
 1S=Single Set Screw
 DS=Double Set Screw

Note: 1. All assemblies are supplied standard with stainless steel fasteners.

Hardware



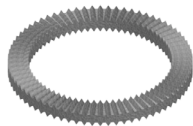
SE-4017-ZN1 **Hex Nut, 1-1/2" NPS, Iron**



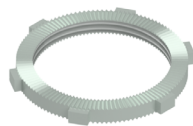
SE-0360-PNC **Lockring, Serrated, Alum**



SE-4029-BRS **Lockring, Serrated, Brass**



SE-0451-PNC **Lockring, Double Serrated, Alum**



SE-4125-PNC **Conduit Locknut, 1-1/2" NPS,
w/ Serrations, Zinc 1**

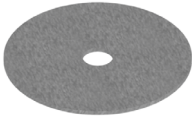


SE-4048-ZN1 **Conduit Locknut, 3/4" NPT, Zinc 1**

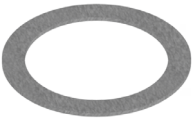
Hardware



SE-0375-SS **Slotted Washer, Stainless**



SE-4113-SS **Washer, Stainless**
0.39" ID x 2.44" OD x .06" THK



SE-4061-SS **Washer, Stainless**
1.97" ID x 2.61" OD x .06" THK



SE-4061-ZN1 **Washer, Steel, Zinc 1**
1.92" ID x 2.61" OD x .06" THK



SE-0367-PNC **Washer, Nylon**
1.93" ID x 2.69" OD x .12" THK

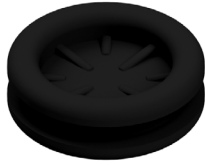


SE-0354-PNC **Gasket, Neoprene**

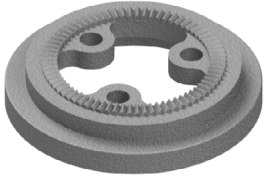


AB-0278-PNC **Gasket, Slotted Tri-Bolt, Neoprene**

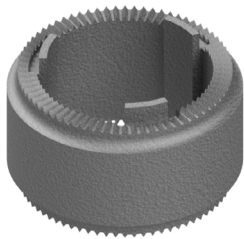
Hardware



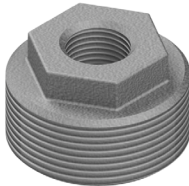
SE-0449-PNC **Grommet, 1-1/2" w/ Diaphragm Neoprene**



AB-0218-PNC **Adapter Ring, 3M, Alum**



SE-0477-PNC **ICC Ped Head Spacer, Alum**



SE-0577-GLV **Reducer Bushing, 1-1/2" NPT x 1/2" NPT, Galvanized Iron**

SE-0471-GLV **Reducer Bushing, 1-1/2" NPT x 3/4" NPT, Galvanized Iron**

SE-0565-GLV **Reducer Bushing, 1-1/2" NPT x 1" NPT, Galvanized Iron**



SE-4011-PNC **Insulator Bushing, 1-1/2" NPS, Black Plastic**



SE-4028-ZN1 **CGB, 3/4", .55" to .65" Wire, Zinc 1**

SE-0490-ZN1 **CGB, 3/4", .55" to .75" Wire, Zinc 1**

SE-4216-ZN1 **CGB, 1", .55" to .65" Wire, Zinc 1**

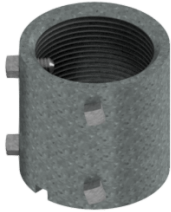
Hardware



Notched Coupling, 1-1/2" NPS x 2", Alum

SE-0346 -

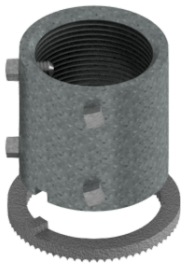
Coating
 PNC=Process No Color
 P__=Paint



Notched Coupling, 1-1/2" NPS x 2", Steel

SE-4170 -

Coating
 GLV=Galvanized
 P__=Paint



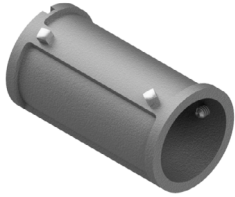
Notched Coupling, Steel 1-1/2" NPS x 2" w/ Lock Ring

SE-3254 - -

Lock Ring Coating
 Blank=Alum GLV=Galvanized
 BRS=Brass P__=Paint

- Note: 1. All assemblies are supplied standard with stainless steel fasteners.
 2. For double set screw option specify by including -DS in the part number, i.e., SE-0346-DS-PNC.
 3. See Reference Section page v for available paint colors.

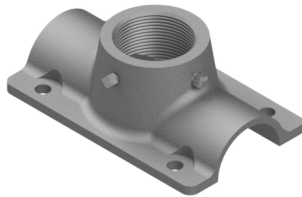




Slip Connector, 1-1/2" NPS, Alum

SE-0535 -

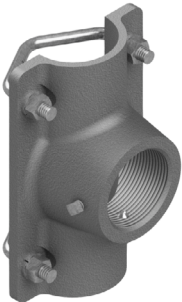
Coating
PNC=Process No Color
P__=Paint



Tube Saddle, 1-1/2" NPS, Alum

AB-0262 -

Coating
PNC=Process No Color
P__=Paint



Tube Saddle Kit, 1-1/2" NPS w/ 5/16" V-Bolts & Hardware, Alum

AB-3048 -

Coating
PNC=Process No Color
P__=Paint

Note: 1. All assemblies are supplied standard with stainless steel fasteners.
2. See Reference Section page v for available paint colors.



Banding Products

BANDING

Catalog Number	Width		Thickness		Weight		Min Breaking Strength in lbs
	Inches	mm	Inches	mm	Lbs	Kg	

TYPE 201 STAINLESS STEEL - 100 Ft. Per Roll

US-8122-04	1/2	12.70	0.030	0.76	5.1	2.4	1500
US-8122-05	5/8	15.88	0.030	0.76	6.4	3.0	1875
US-8122-06	3/4	19.05	0.030	0.76	7.7	3.6	2250

TYPE 316 STAINLESS STEEL BAND - 100 Ft. Per Roll

US-8124-04	1/2	12.70	0.030	0.76	5.1	2.4	1200
US-8124-05	5/8	15.88	0.030	0.76	6.4	3.0	1500
US-8124-06	3/4	19.05	0.030	0.76	7.7	3.6	1800

HEAVY DUTY (HD) BANDING

Heavy Duty Band is available in type 201. HD Band is designed for heavy duty applications and 1-1/4", 201 stainless steel band has a breaking strength of approximately 5500 lbs. We recommend double wrapping for maximum strength.

Catalog Number	Width		Thickness		Weight	
	Inches	mm	Inches	mm	Lbs	Kg

TYPE 201 HEAVY DUTY STAINLESS STEEL BAND - 100 Ft. Per Roll

US-8124-30	3/4	19.05	0.044	1.12	11.6	5.4
US-8124-31	1	25.40	0.044	1.12	13.7	6.4
US-8124-32	1-1/4	31.75	0.044	1.12	17.2	8.0

BAND-STRAP .024" (.061mm) THICK - 200 - 300 Stainless Steel

Catalog Number	Width		Weight		Package Quantity
	Inches	mm	Lbs	Kg	

US-8121-34	1/2	12.70	4.08	1.85	100 Ft. Roll
US-8121-35	5/8	15.88	5.09	2.31	100 Ft. Roll
US-8121-36	3/4	19.05	6.11	2.77	100 Ft. Roll
US-8121-28	1/2	12.70	8.15	3.70	200 Ft. Roll
US-8121-29	5/8	15.88	10.19	4.62	200 Ft. Roll
US-8121-30	3/4	19.05	12.23	5.54	200 Ft. Roll



BAND TOOL

The USA BAND TOOL is a forged double-plated tool capable of tensioning over 2400 lbs. The banding tool has a built-in cutter and a spring loaded gripper lever. The spin handle has a large retaining ring to keep the handle in place and can be used to hang on a tool belt.

Catalog Number	Description
----------------	-------------

US-8120-01	The USA Band Tool, Wt. 4.4 lbs (2.0 kg) - Package Quantity 1
US-8120-43	Close Quarter Tension Nut. Replaces tool tension handle when space is limited. Package Quantity 1
US-8120-06	Tension Screw/Handle kit - Package Quantity 1



HEAVY DUTY BAND TOOL

The Heavy Duty TOOL must be used with all Heavy Duty Bands. The HD TOOL is 16-1/2 inches long and is capable of up to 6,000 lbs. of tensioning.

Catalog Number	Description
----------------	-------------

US-8121-10	The Heavy Duty Tool, Wt 11.7 lbs (5.3 Kg) - Package Quantity 1
------------	--

Buckles

BUCKLES

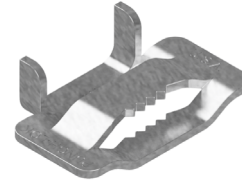
Catalog Number	Width		Weight	
	Inches	mm	Lbs	Kg

TYPE 201 STAINLESS STEEL BUCKLES - Package Quantity 100

US-8122-54	1/2	12.70	2.1	1.0
US-8122-55	5/8	15.88	2.4	1.1
US-8122-56	3/4	19.05	3.7	1.7

TYPE 316 STAINLESS STEEL BUCKLES - Package Quantity 100

US-8124-54	1/2	12.70	2.1	1.0
US-8124-55	5/8	15.88	2.4	1.1
US-8124-56	3/4	19.05	3.7	1.7



HEAVY DUTY BUCKLES

HD Buckles are offered in widths and metals to correspond to HD Band. Clamps may be double wrapped for extra strength.

Catalog Number	Width		Weight	
	Inches	mm	Lbs	Kg

TYPE 201/301 STAINLESS STEEL - Package Quantity 25

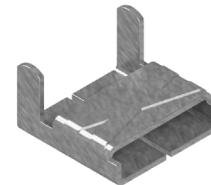
US-8124-40	3/4	19.05	1.8	0.8
US-8124-41	1	25.40	2.4	1.1
US-8124-42	1-1/4	31.75	3.2	1.4

BAND CLIPS

Catalog Number	Width		Weight	
	Inches	mm	Lbs	Kg

TYPE 201 STAINLESS STEEL BAND CLIPS - Package Quantity 100

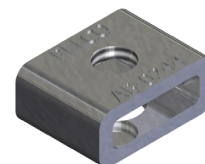
US-8121-54	1/2	12.70	2.1	1.0
US-8121-55	5/8	15.88	2.4	1.1
US-8121-56	3/4	19.05	3.7	1.7



A-SCREW LOCK BUCKLES - Stainless Steel

Catalog Number	Width		Weight		Package Quantity
	Inches	mm	Lbs	Kg	

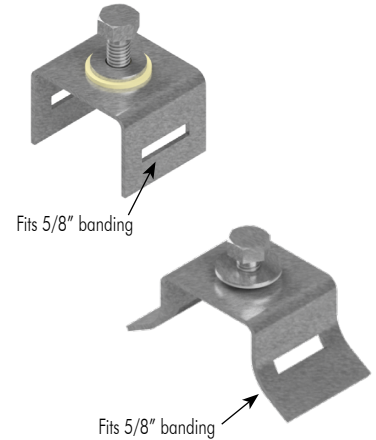
US-8127-26	3/4	19.05	3.7	1.7	25
------------	-----	-------	-----	-----	----



Brackets

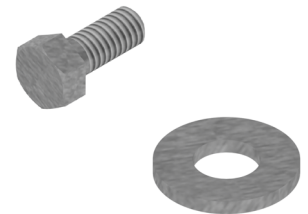
SIGN MOUNTING BRACKETS

Catalog Number	Discription	Weight	
		Lbs	Kg
1-BOLT STRAIGHT LEG BRACKET (.075" THICK) - Package Quantity 50			
US-8121-00	Stainless Steel with SS Bolt, Washer and Fiber Washer	7.3	3.3
US-8120-04	Stainless Steel without Bolt or Washer		
US-8120-11	Zinc Plated Steel with Carbon Bolt, Washer and Fiber Washer	7.6	3.5
1-BOLT FLARED LEG BRACKET (.075" THICK) - Package Quantity 50			
US-8120-21	Stainless Steel with SS Bolt and Washer	7.6	3.5
US-8120-31	Zinc Plated Steel with Carbon Bolt, Washer and Fiber Washer	7.4	3.4



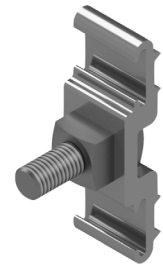
BOLTS, WASHERS for BRACKETS - 50 Per Box

Catalog Number	Description
US-8120-02	Bolts Stainless Steel for Stainless Brackets (5/16 - 18 x 3/4" Long Hex Head)
US-8120-03	Fiber Washers



MOUNTING PLATES - Per Each - Secure with band and buckles. Strapping holds this extruded aluminum mounting plate to utility poles.

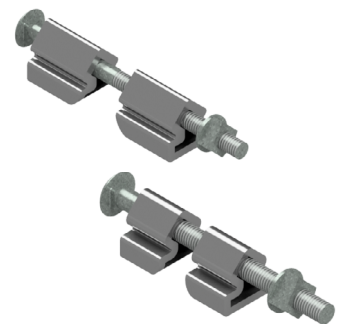
Catalog Number	Description	Weight Lbs/Ea
US-8125-10	Light Duty, 1-1/2" x 4-3/4" w/ 5/8"-11 x 2" Plated Bolt	0.57
US-8125-12	Heavy Duty, 1-1/2" x 5-1/4" w/ 5/8"-11 x 2" Plated Bolt	0.78
US-8125-11	Heavy Duty, 1-1/2" x 5-1/4" w/ 5/8"-11 x 3" Plated Bolt	0.84
US-8125-13	Heavy Duty, 1-1/2" x 5-1/4" w/ 3/4"-11 x 3" Plated Bolt	1.22



USA BOLT / CLAMP - Per Each

Extruded aluminum fittings with zinc plated bolt, nut and washer.
To be used with USA Band for mounting pole hardware.

Catalog Number	Description	Weight Lbs/Ea
US-8500	Bolt/Clamp for use with 3/4" USA BAND band (US-8122-06). Includes plated nut, bolt 3/8" - 16 x 6" and washer.	0.43
US-8504	Bolt/Clamp for use with 1-1/4" USA BAND band (US-8124-62). Includes plated nut, bolt 5/8" - 11 x 8" and washer.	1.48



This page is intentionally left blank.

COMPONENTS

