

CT-2430

Trailer-Mounted Camera

The CT-2430 is a portable camera trailer designed to provide height and stability for the deployment of outdoor dynamic video surveillance. The CT-2430 camera trailer is perfect to remotely monitor work zones, construction sites, special events or any application where permanent cameras are not available or feasible.

FEATURES & BENEFITS

- **30' galvanized mast**
rotates 360 degrees and retracts for easy transport
- **Tilt-and-Rotate solar panels**
maximize solar recharging and increase battery life
- **12 VDC / solar power system**
sustainable video surveillance anywhere
- **Environmentally friendly**
no generator, noise or pollution
- **Wireless communication**
remote monitoring from your PC, laptop, tablet or smartphone
- **Multi-use**
accepts most IP video surveillance cameras and non-intrusive traffic sensors
- **Compact design**
deploys in 10 minutes and easy to tow and store
- **PTZ camera control**
pan, tilt and zoom on your desired location
- **Preset views**
create several views for instant one-click redirecting of camera



AXIS P5624-E MK II CAMERA

- PTZ dome network camera
- Rated for rugged outdoor climate (IP66)
- Continuous 360o pan
- Excellent light sensitivity (day & night)
- HDTV 720p and 23x optical zoom
- Low cellular fees with Zipstream technology

BENEFITS OF REMOTE MONITORING

WORK ZONES

- View incidents quicker – improving emergency response
- Smart Work Zone – monitor congestion “hot spots”
- Integrate into TMC – manage with existing cameras

CONSTRUCTION SITES

- Protect equipment – discourage theft and vandalism
- Save time and money – less surveillance personnel needed
- Manage work site – improve scheduling and logistics

SPECIAL EVENTS

- Prevent incidents - view and alert security immediately
- Video recording – incident record for investigation
- Manage pedestrians and motorists – improve safety and mobility

HIGH-QUALITY CONSTRUCTION

- Galvanized mast – complete protection from rust
- Powder coating superior finish – impact, humidity, salt spray and rust resistant
- 4 leveling jacks – for stabilization and easy transportation
- Manual lift mechanism – for quick deployment
- Heavy-duty plastic fenders – for durability
- Plastic battery boxes – to minimize battery corrosion
- Lockable control box – for security
- 2-in. (51 mm) coupler or 3-in. (76 mm) pintle eye – for easy towing

DIMENSIONS & WEIGHT

- Overall length: 189 in. (4791 mm)
- Overall width: 90 in. (2292 mm)
- Operating height: 377 in. (9563 mm)
- Traveling height: 63 in. (1591 mm)
- Axle/suspension: 1588 kg (3,500 lb.)
- Weight (approx.): 1280 kg (2,822 lb.)

GENERAL SPECIFICATIONS

- 30 amp battery charger
- 30' galvanized mast

OPTIONS

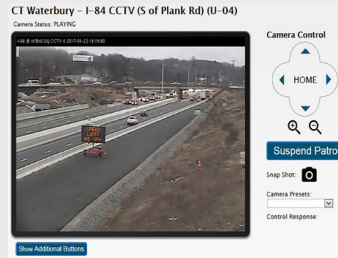
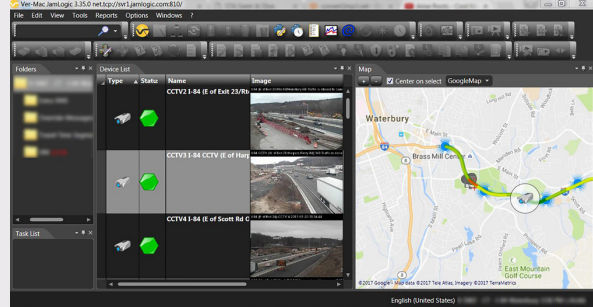
- Stream live video of work zone
- Record video
- Traffic sensor

Ask for custom options available to meet your needs.

JAMLOGIC SOFTWARE

CT-2430 comes with Ver-Mac’s high-speed modem with GPS to maximize your productivity, efficiency and profitability all remotely from your office or home!

- View your equipment in a list and GPS map view
- View you camera images on a single screen
- Interactive list and map view
- Integrate with PCMS and sensors
- View communication status and battery voltages



Contact us today for more information.

T 800.661.7346 E info@atstraffic.ca

atstraffic.ca | Since 1966

