

Trailer-Mounted Message Sign

The PCMS-548/PCMS-548LE are mini full-matrix trailer-mounted portable changeable message signs. They feature the NTCIP-compliant V-Touch controller, Tilt-and-Rotate solar panels, JamLogic fleet management software (modem required) and optional Stealth Technology. Both units combine energy-efficient design and high-quality construction to provide the most reliable and cost-effective message signs on the market. PCMS-548 is perfect for lower speed roadways and urban areas. PCMS-548LE has the same features, but comes painted in white with radar and modem, which makes it the perfect model for law enforcement.



V-TOUCH CONTROLLER

- **NTCIP compliant**
- **Easy-to-read** – 7-inch (178 mm) color LCD pressure-sensitive display screen
- **User-friendly** – one-click icon-based menu items
- **Time-saving** – create your own library of messages
- **Simple to operate** – the intuitive point-n-go icons ensure quick and easy commands to display or edit messages
- **Additional functionalities** – scheduling, sign diagnostics, pin-protected security, and much more



POWER SUPPLY CONFIGURATION

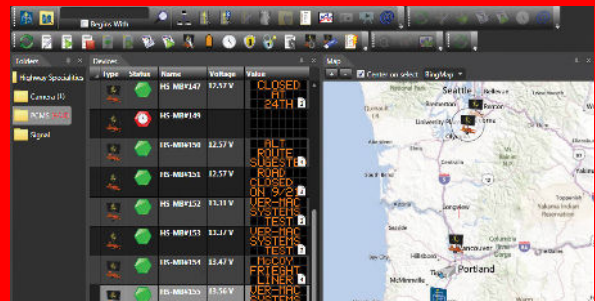
- **TILT-AND-ROTATE SOLAR PANELS**
Panels tilt to a 45-degree angle to provide maximum solar recharging during all four seasons.
- Designed to run 12 months in most regions without manual charging.
- Various configurations of solar panels and batteries are available to meet your needs.

HIGH-QUALITY CONSTRUCTION

- Powder coating superior finish – impact, humidity, salt spray and rust resistant
- 4 leveling jacks – for stabilization and easy transportation
- Manual lift mechanism – for a quick deployment
- Heavy-duty plastic fenders – for durability and easy replacement
- Plastic battery box – to minimize battery corrosion
- Lockable control box – for security
- 2-in. (51 mm) coupler or 3-in. (76 mm) pintle eye – for easy towing

APPLICATIONS

- City and county (urban areas)
- School zones
- Special events



- Display panel: 45 in. x 80 in. (1146 mm x 2027 mm)
- Full matrix of 30 x 56 pixels
- 4 LEDs per pixel
- Up to 3 lines of 12 characters per line
- Display sign rotates 360 degrees for perfect setting
- Plug-and-play display modules for simplified maintenance

- Overall length: 140 in. (3565 mm)
- Overall width: 71 in. (1791 mm)
- Operating height: 161 in. (4081 mm)
- Traveling height: 95 in. (2417 mm)
- Axle/suspension: 907 kg (2,000 lb.)
- Weight (approx.): 580 kg (1,280 lb.)

- Modem
- Data plan (requires modem)
- Battery charger
- Tongue wheel jack
- Radar
- Datalogger (requires radar)
- Stealth Technology

Other options are available to meet your needs.

- 1-year warranty on complete trailers
- 2-year warranty on electronics manufactured Ver-Mac